

VPS-ROBERTA®

BY KIRSCHENHOFER

The VPS-ROBERTA® is a modern, robot-controlled and self-contained sales unit, which fulfils the wishes of your customers autonomously at any time of day.



SHOP EASY



SMART



INDIVIDUELL



SYSTEM



The picture above shows a **finished sales unit**, equipped with an **individual exterior cladding**. We can prepare the roof for a **photovoltaic system** upon request.

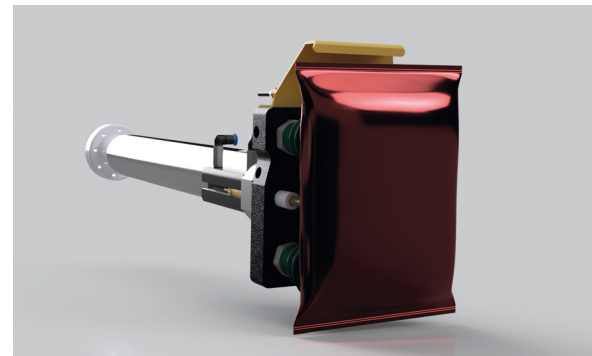
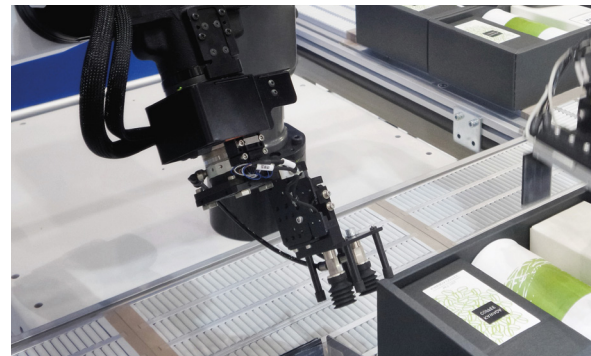
R^{VPS} BERTA

#09/2023

VIEWS



Standard module
VPS-ROBERTA® in the
color combination
RAL 7043 and wood Kyoto.



The heart of VPS-ROBERTA® is a servo-controlled robot arm which uses a specialized gripping technique to pick the desired products and transports them into a shopping cart.

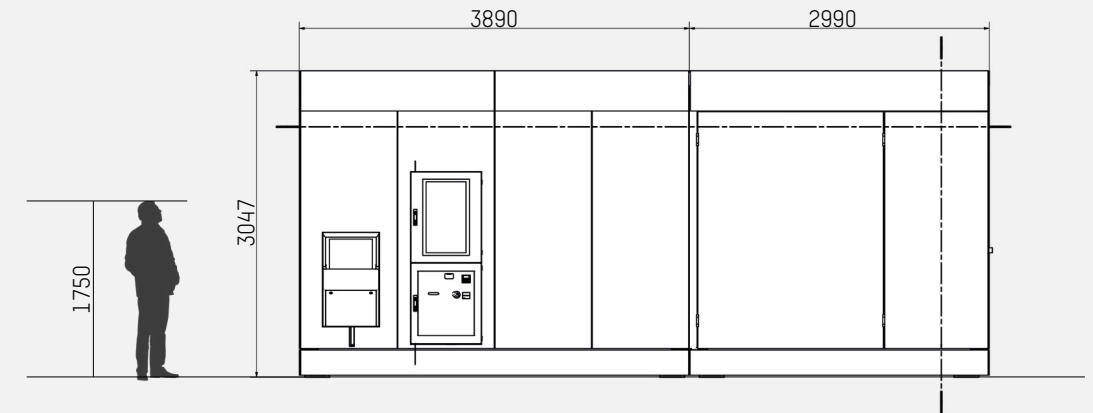
Exemplary product arrangement in the interior.

Robot arm end piece with vacuum or gripper technology.

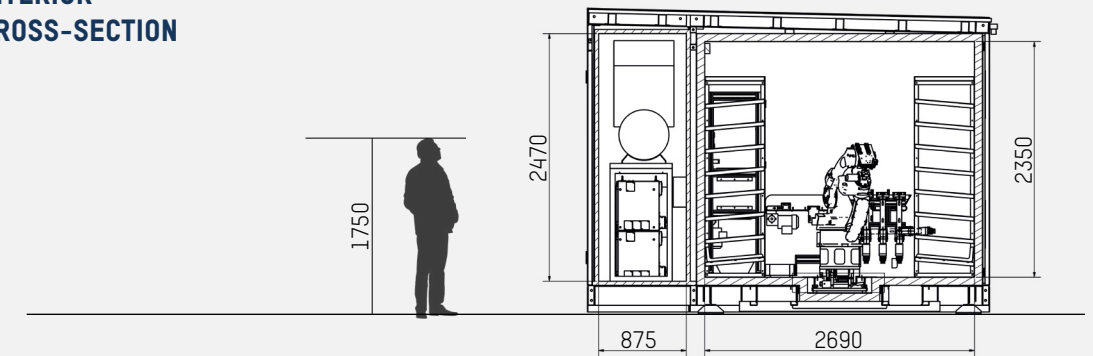
TECHNICAL VIEWS STANDARD MODULE VPS-ROBERTA®

Current minimum dimensions (sizes in millimeters)

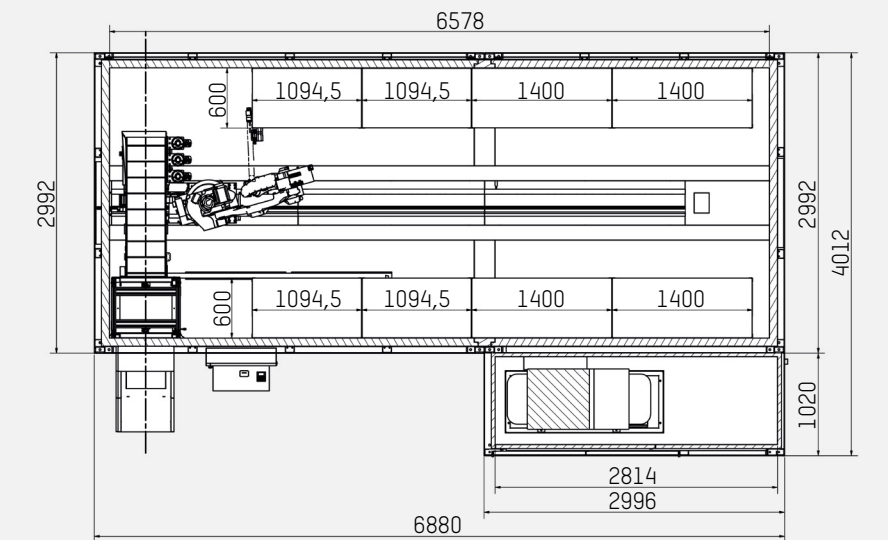
FRONT



INTERIOR CROSS-SECTION



INTERIOR FROM ABOVE



ORDER PROCESS



3

Inside the VPS, the **servo-controlled robotic arm** moves all the desired items **quickly and safely** into the **shopping cart**.



4

Once the **payment of goods** was **successful**, all purchased products can be collected at the **goods issue belt**.



1

The customer can place an **order** at **any time of the day** – even in advance in an optional **online store**.



2

At the **large display** with integrated **goods issue belt**, the customer **places his order** or **picks up articles** already ordered online **simply and conveniently** using a **order code**.

TECHNIQUE & CONSTRUCTION

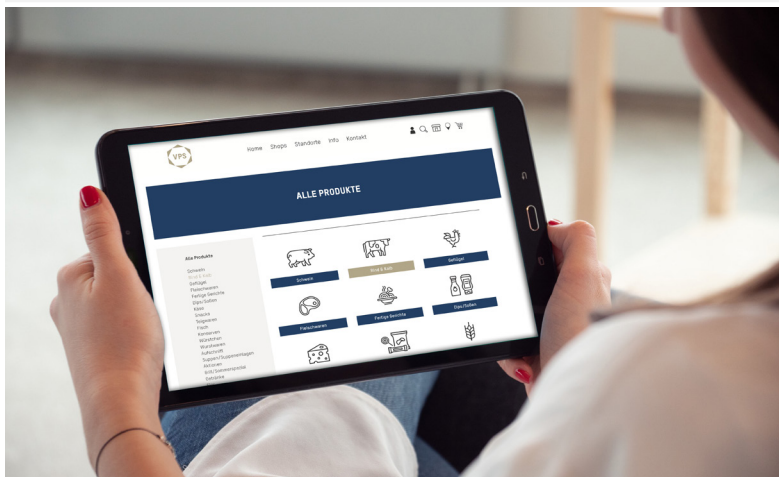


DISPLAY & INTERFACE

- The order is entered via a **touchscreen-display**
- The customer is guided through the individual order sections via an **intuitive program interface**

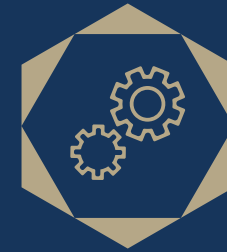
ONLINESHOP

- The VPS is available with an **integrated online store** → further information upon request



SOFTWARE & PROGRAMMING

- A **PC and PLC based software** controls the complete sales process
- **In-house programming** enables **flexible adjustments** to the program sequences
- The **integrated warehouse management program** supports warehouse management
- **Automatic monitoring of shelf life**
- **Statistical evaluation** of stock and turnover



INTERIOR SPACE

- Inside there is a **shelving system** that can hold up to **20,000 – 65,000 items**
- The shelves and racks **can be adapted and configuration** to the respective products
- The **interior temperature** is adjustable and can be **reduced to a cooling of -20 C°** (if desired)

ROBOTIC ARM

- Inside, a **servo-controlled robot arm** moves on rails through the racking system
- Using a **special vacuum or gripper technology**, the products are picked and placed on a **conveyor belt**
- This is possible up to an item **weight of 2,5 kilogram** → higher weight capacity on request



CONVEYOR BELT & GOODS ISSUE

- The selected articles reach the **goods issue** via a **conveyor belt**
- The **merchandise flap** opens as soon as the payment process is **completely finished**
- **Goods issue individually designable**

PAYMENT SYSTEM

- Payment is made via an **integrated paygateway** with EC or credit card
- **Accept all major card and contactless payment methods:** Visa, Master, Maestro, Giro, Apple Pay, Google Pay

TECHNICAL DATA*

		Standalone	Built-in
Width		4,0 m	Min. 3,0 m
Height		3,0 m	Min. 2,7 m
Length		7,0 m	Min. 4,0 m
Extension	Modularly extendable	4,0 m x 3,0 m	1,5 m x 3 m
Rack depth	On both sides	580 mm	580 mm
Rack grid	In height and width	25 mm	25 mm
Rack stocking	Manually	Yes	Yes
Picking time		15 to 22 sec/item	15 to 22 sec/item
Delivery time		13 sec/process	13 sec/process
Product codes		EAN, PLU	EAN, PLU
Power supply		3-phase 400 V / 480V 16 A fused	3-phase 400 V / 480V 16 A fused
Energy consumption	Operational	Approx. 500 VAh	Approx. 500 VAh
	Full load	Approx. 2800 VAh	Approx. 2800 VAh
Cooling	Approx. 2°C	Yes	Optional
Interchangeable gripper	Second gripper inclusive	Yes	Yes
Add-on gripper	Third and fourth gripper	Optional	Optional
Manageable packaging	Square packaging Maximum size of square packaging: 360 x 250 x 250 mm (HxWxD) / 2,5 kg → Larger packaging on request		
	Metal / Plastic / Glass	Yes	Yes
	Round Packaging		
	Metal / Plastic / Glass	Yes	Yes
	Aluminum foil	Yes	Yes
	Thermoforming film	Yes	Yes
	Plastic bag	Yes w/ interchangeable gripper	Yes w/ interchangeable gripper
		Optional with loading magazines	
Standard equipment	Scanner for warehouse management	Yes	Yes
	Tablet w/ management software	Yes	Yes
	Receipt printer	Yes	Yes
	Best before date monitoring	Yes	Yes
	Rack-system	Yes	Yes
	Delivery belt	Yes	Yes
	Sales terminal	Yes	Yes
	Robotic transfer-system	Yes	Yes
Options	Additional gripper	Optional	Optional
	Smartbox expansion	Optional	Optional
	Magazine system	Optional	Optional

* When calculating technical data, we always strive for the greatest possible accuracy. The above information serves as guide values. The accuracy of the information may vary due to local or technical conditions.

ALL IN ONE

SHORT COMPACT SUMMARY OF THE CORE FUNCTIONS OF VPS-ROBERTA®

MOBILITY & LOCATION



VPS is **mobile** and **location independent** – if desired.

INDIVIDUALITY



The **exterior cladding** is **customizable** and can thus be **perfectly adapted** to the existing **corporate identity**.

24/7 SALES PLATFORM



It provides a **sales platform around the clock** – regardless of **weekends** and **holidays**.

FLEXIBILITY



Size and dimensions are completely **flexible** in **design**.

CAPACITY



An **item capacity** of up to **20,000 – 65,000 products** can be recorded.

INTERNATIONAL



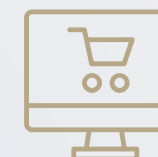
The **display** and **input interface** are **multilingual** if desired.

INTUITION



The **input display** has an **intuitive interface**.

ONLINESHOP



The VPS is available with an **integrated online store**, which makes shopping **even more convenient**.

ABOUT US



With more than 25 years of experience in special purpose machine design and more than 40 qualified employees, we develop efficient methods for your requirements that lead to economically lucrative solutions.

All important aspects are located at Kirschenhofer Maschinen GmbH in-house. From design to assembly, but also in the areas of training and service you will receive comprehensive support from us. We only work together with absolutely reliable, selected suppliers. When looking for solutions to complex requirements, the focus is always on high accuracy and punctuality.

FOR MORE INFORMATION SEE THE FOLLOWING PAGES:

WWW.VPS-ROBERTA.DE

WWW.LINKEDIN.COM/SHOWCASE/VPS-ROBERTA

WWW.FACEBOOK.COM/VPSROBERTA

KIRSCHENHOFER MASCHINEN GMBH

Römerstraße 35
89278 Nersingen-Straß
Germany
T +49 7308 81796-0

info@kirschenhofer-gmbh.de
www.kirschenhofer-gmbh.de



R VPS BERTA

